

Bow Concord I-93 Improvements

Greater Concord Chamber of Commerce

December 12, 2016

Agenda

- Project History / Project Development Process
- Traffic Modeling
- Alternatives Development
 - I-93 Corridor
 - I-89/I-93
 - Exit 12
 - Exit 13
 - Exit 14/15
- Next Steps
- Questions and Answers

Project History/ Project Development Process

Part A – Planning (2002 - 2008)

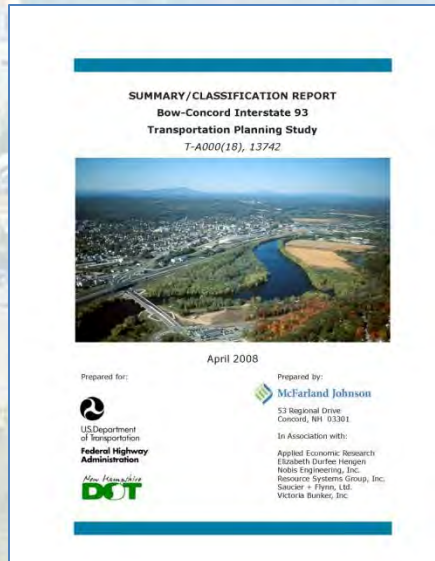
- Problem & Goal Statements
- Range of Reasonable Alternatives
- Determine Level of Environmental Document
- Prepare Summary/Classification Report

Red List Bridges (2008 - 2016)

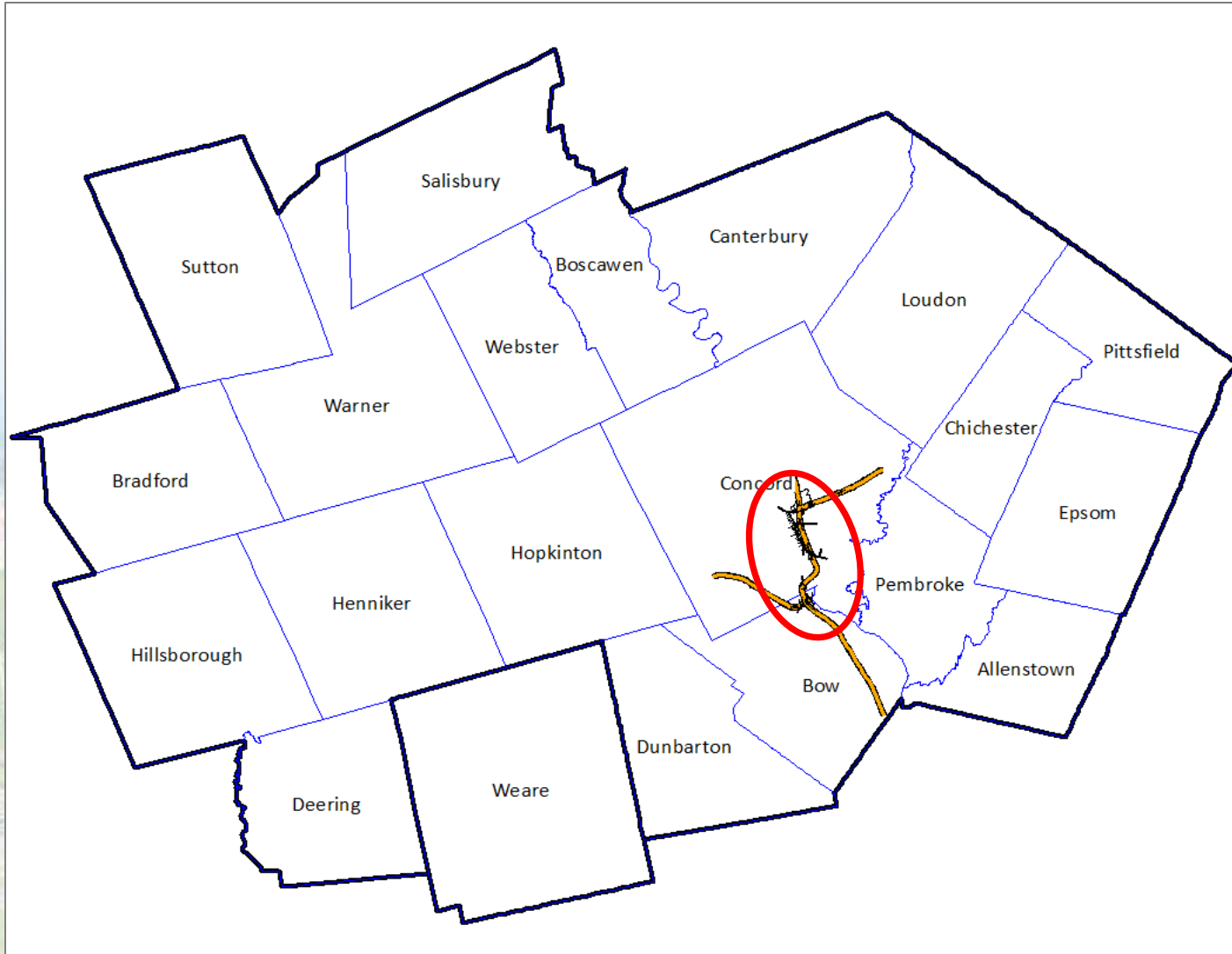
- Exit 14 Rehabilitation
- I-93 over I-89 Replacement
- Exit 12 Replacement

Part B – Scoping (2013 - 2017)

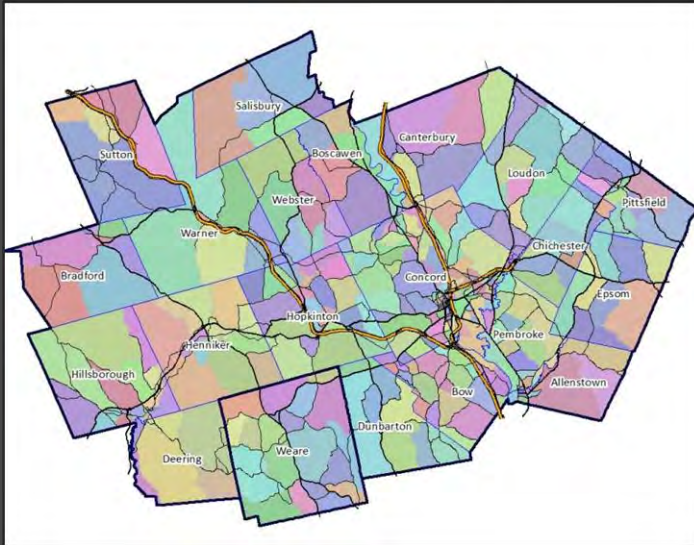
- Select Preferred Alternative
- Environmental Documentation (EA)
- Public Hearing



Traffic Modeling



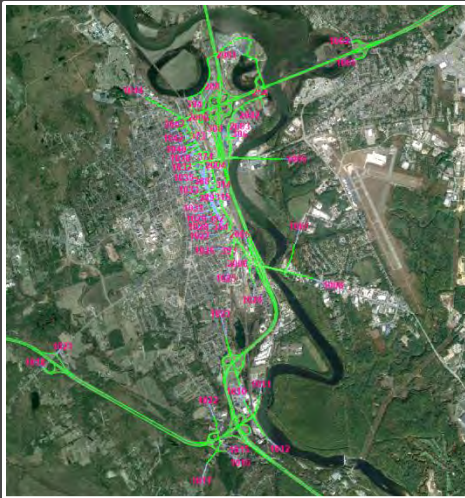
Traffic Modeling



Regional Model

- Inputs
- Process Overview
- Future Year Projections
- TransCAD (Caliper)

Traffic Modeling



Microsimulation Model

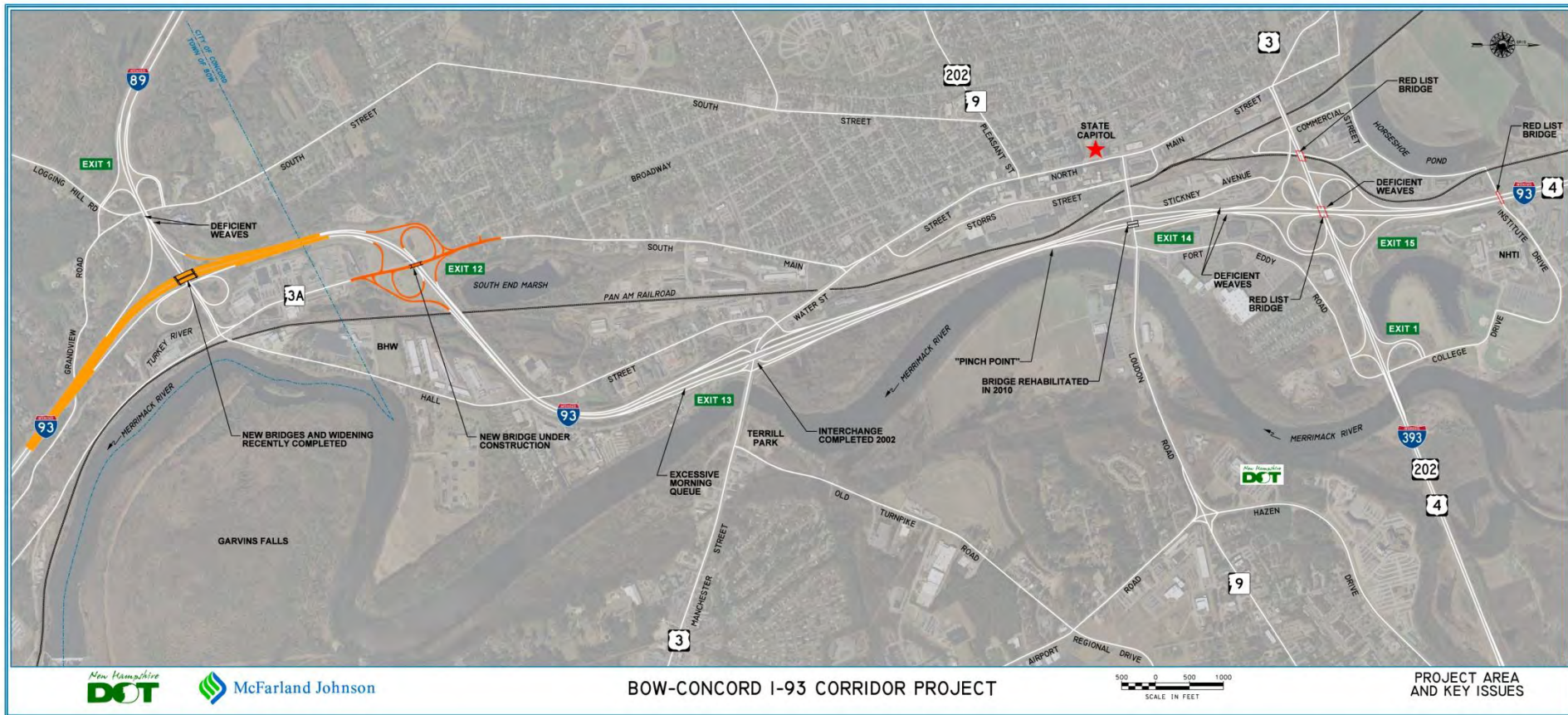
- Inputs
- Process Overview
- Future Year Projections
- Alternatives Testing
- TransModeler (Caliper)

Microsimulation Model – Details

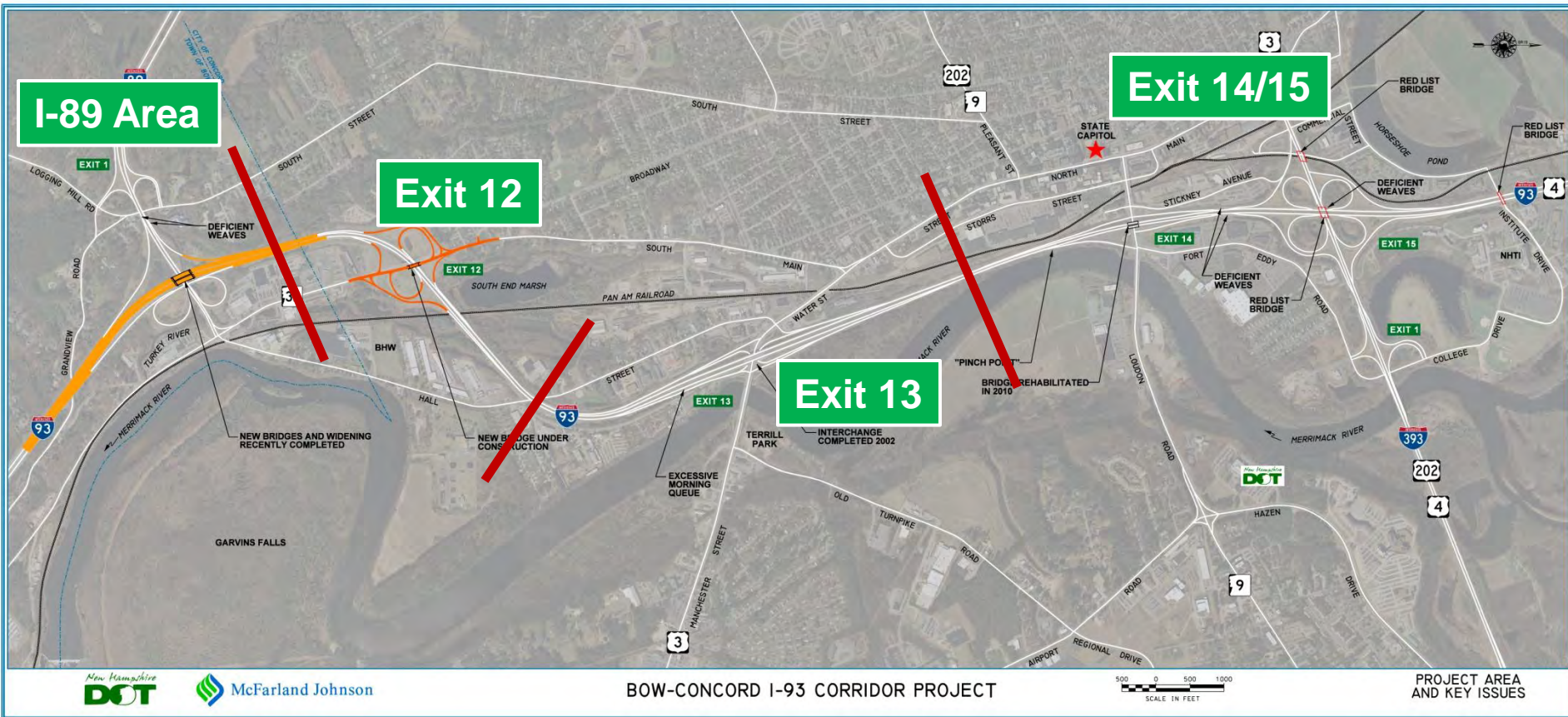
- Traffic Analysis Zones
 - TAZs built from census blocks
 - Overlap with regional model zones
 - Includes some additional detail
 - Traffic generated by OD matrix – informed by land use.
- Road Network
 - Links
 - Direction of Travel
 - Speed
 - Class
 - Lane Geometries
 - Storage lengths
 - Merge areas
 - Intersections
 - Control Types
 - Signal Timings
 - TOD Plans
 - Coordination



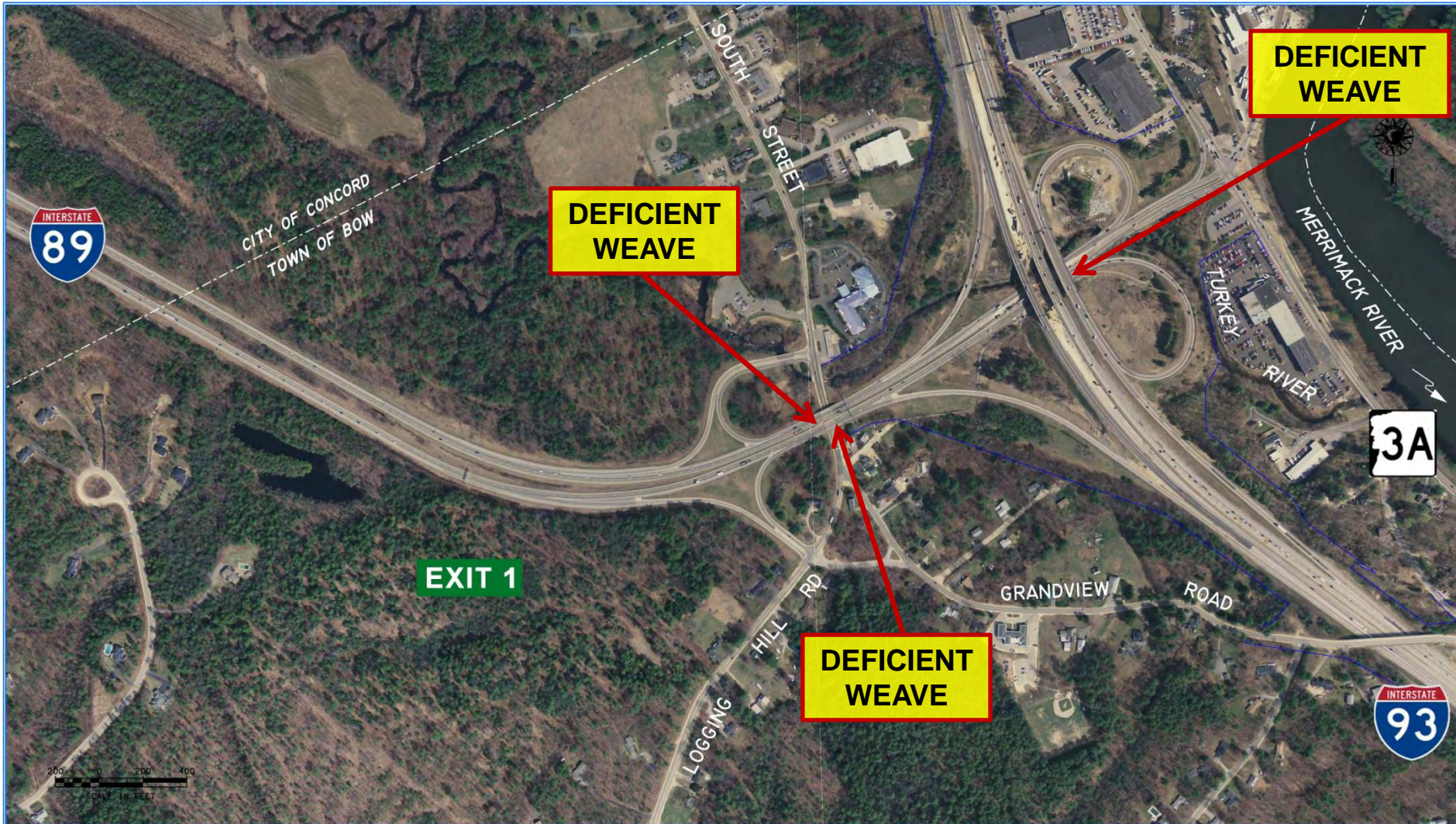
Alternatives Development

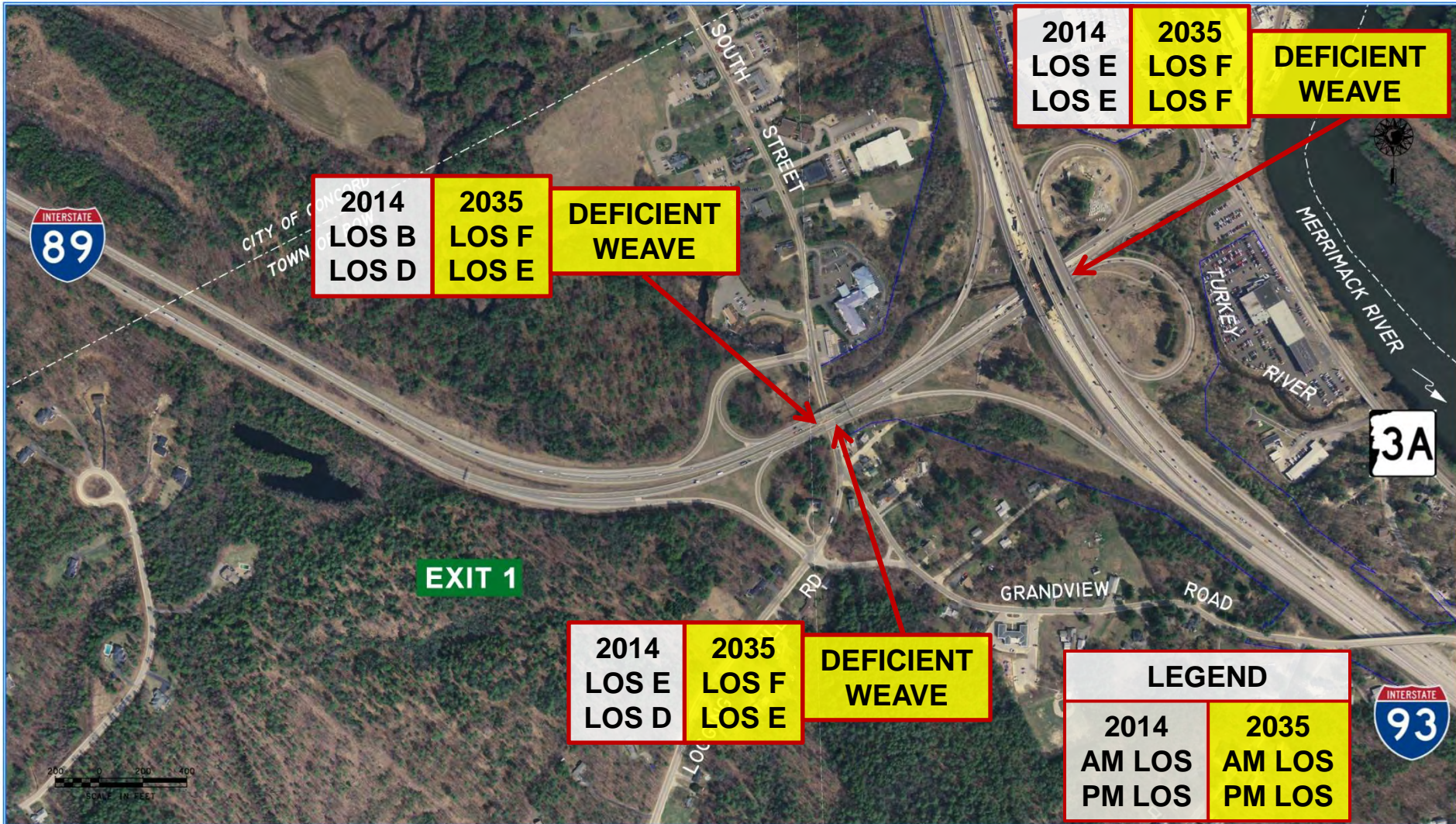


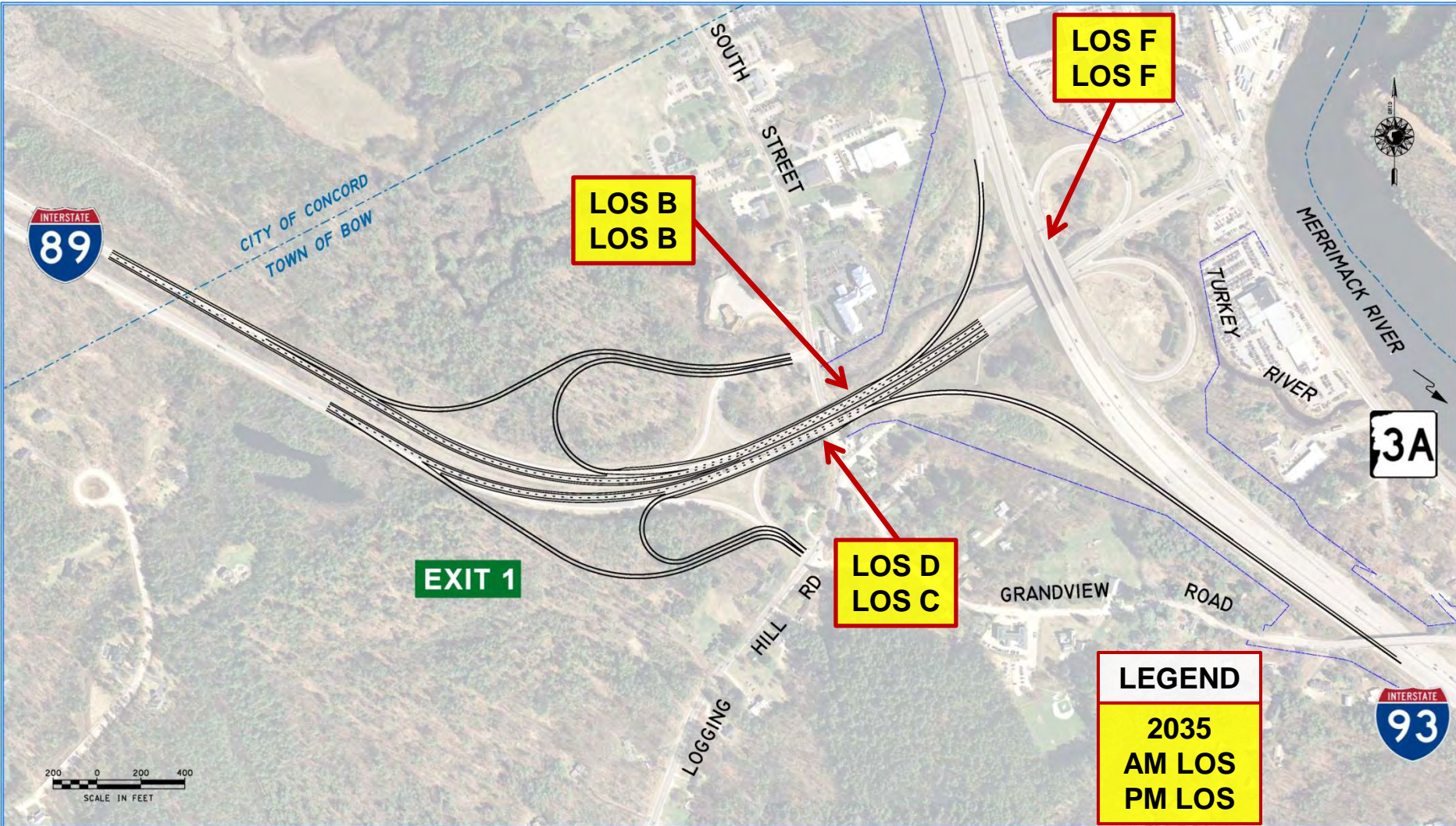
Alternatives Development

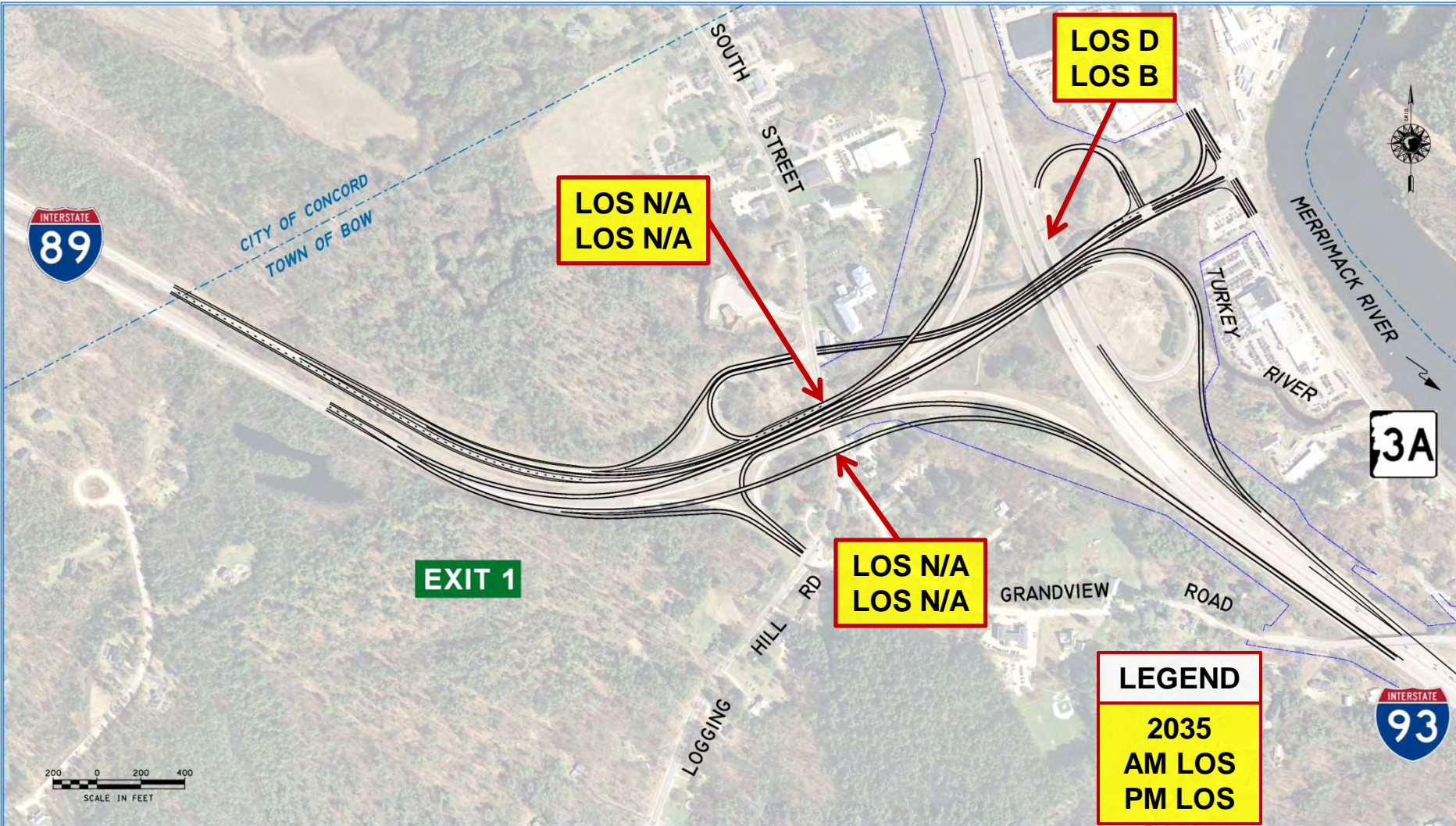


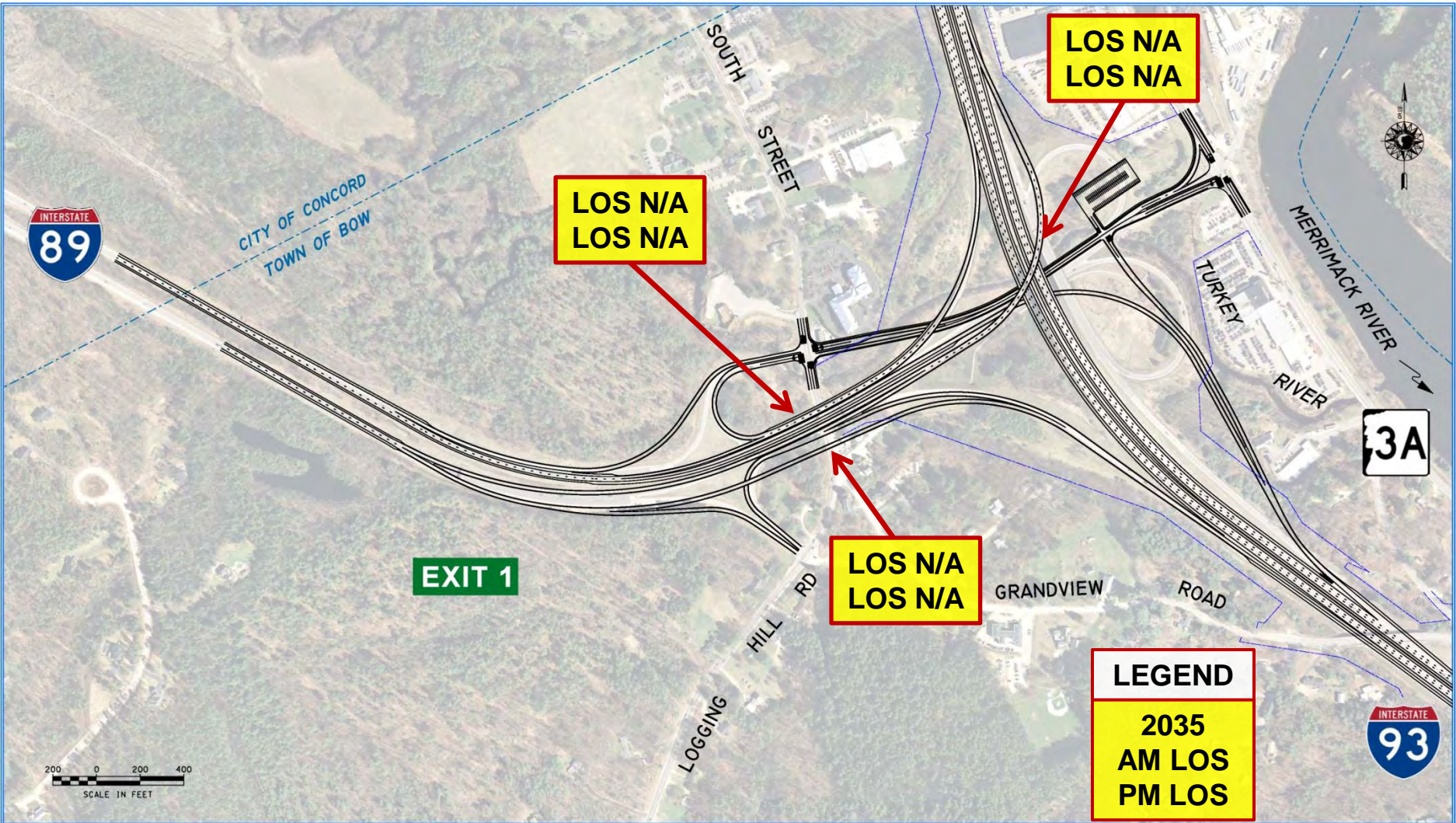




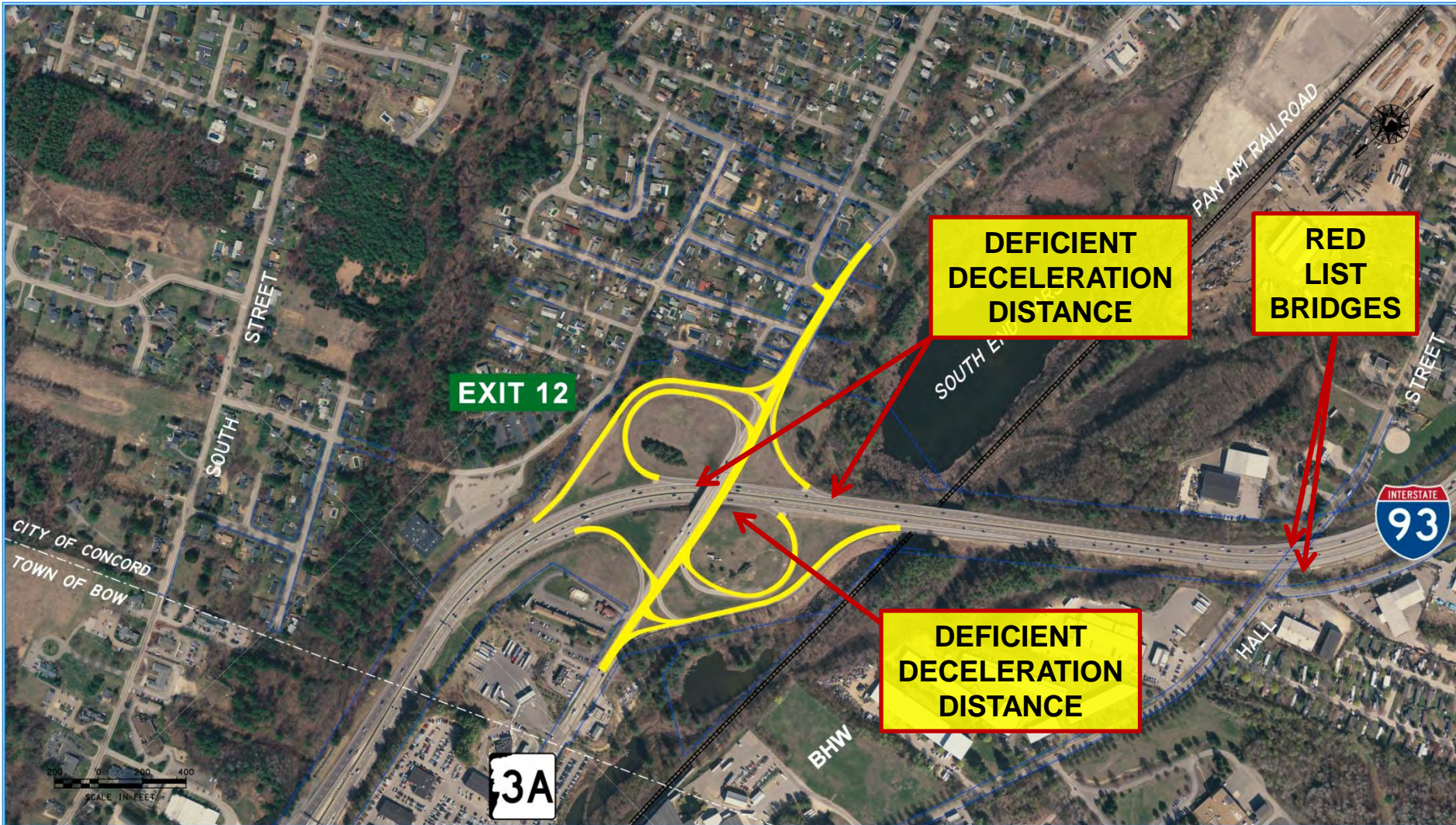


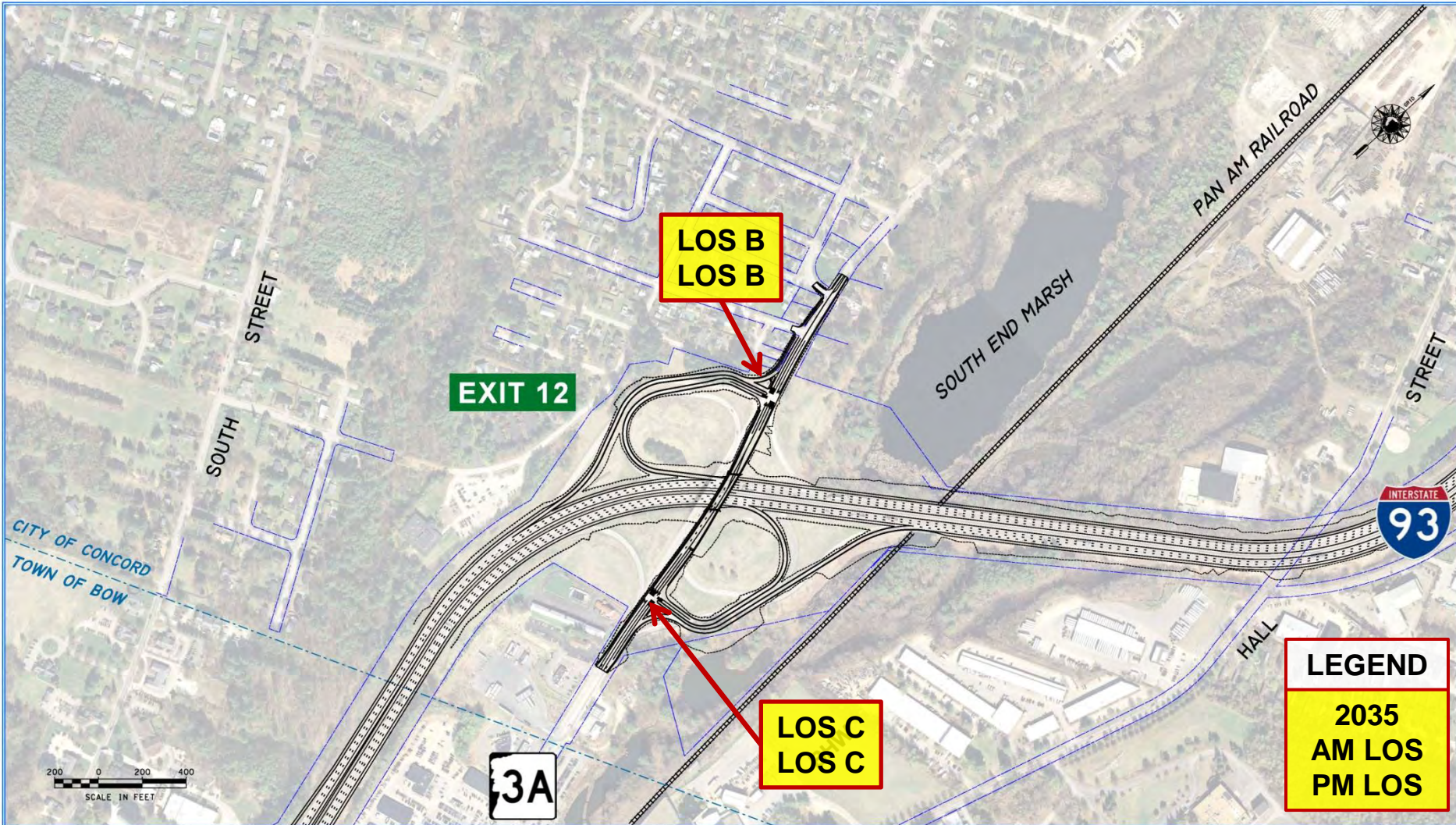


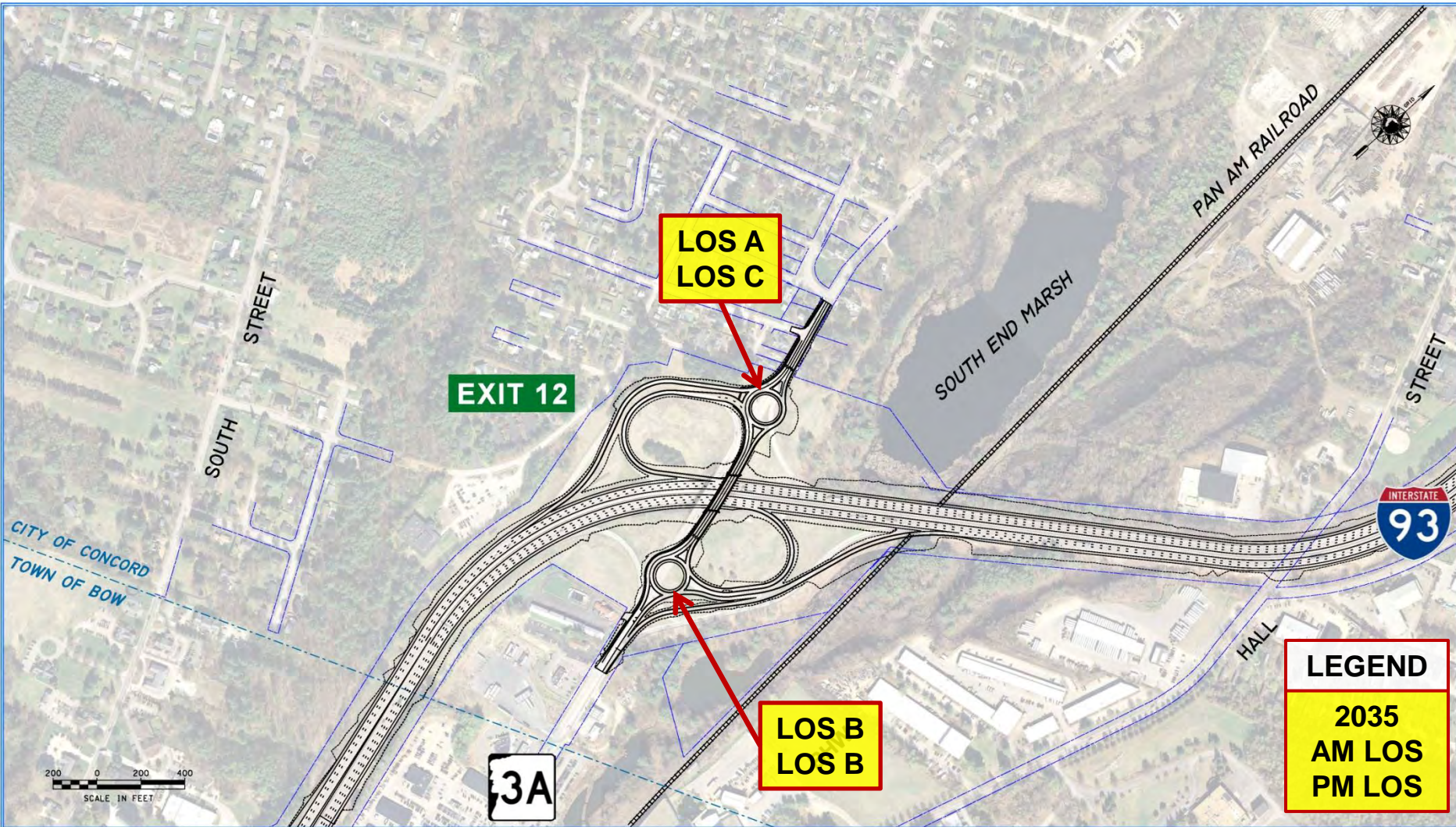








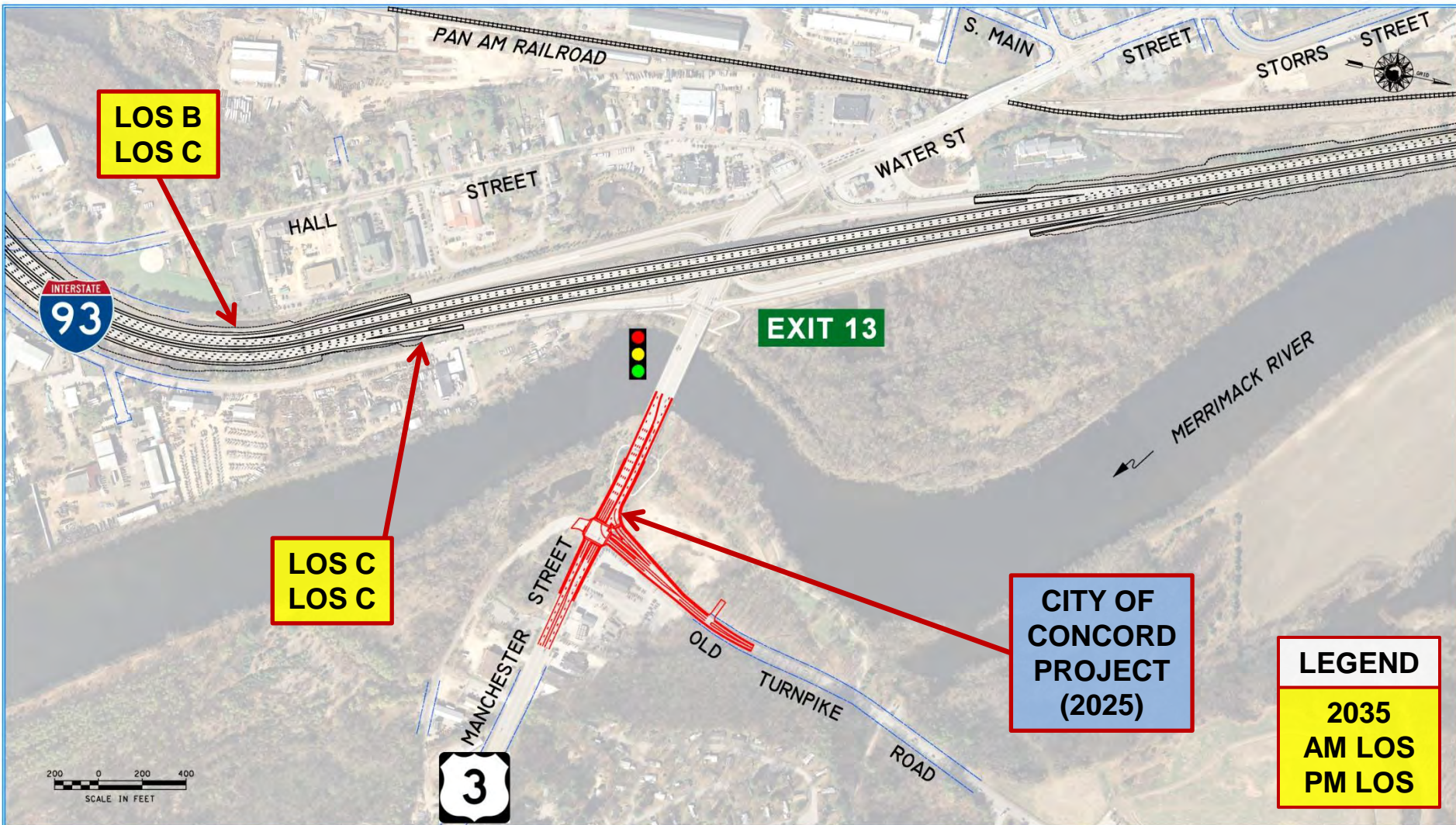




LEGEND

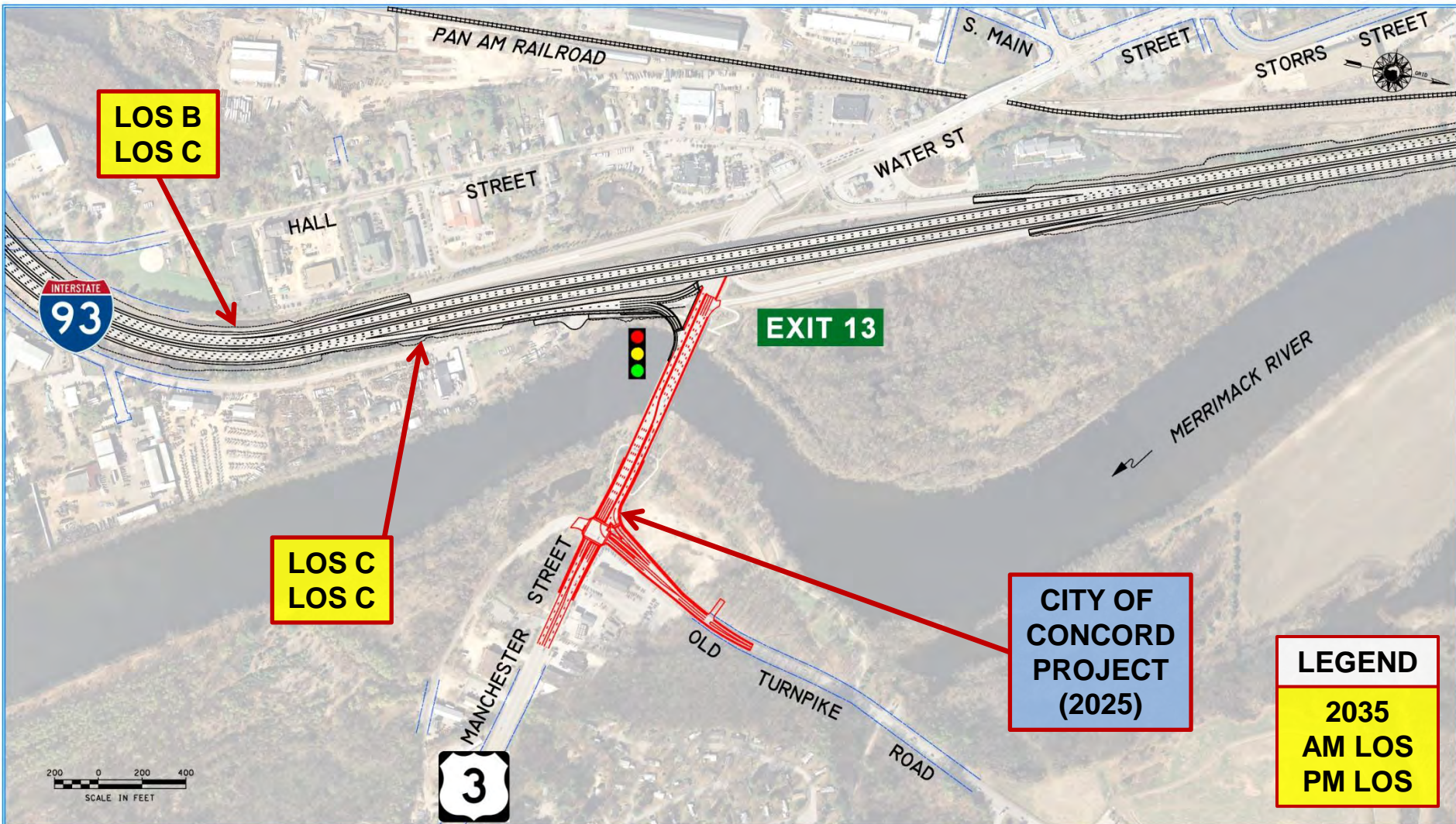
2035
AM LOS
PM LOS

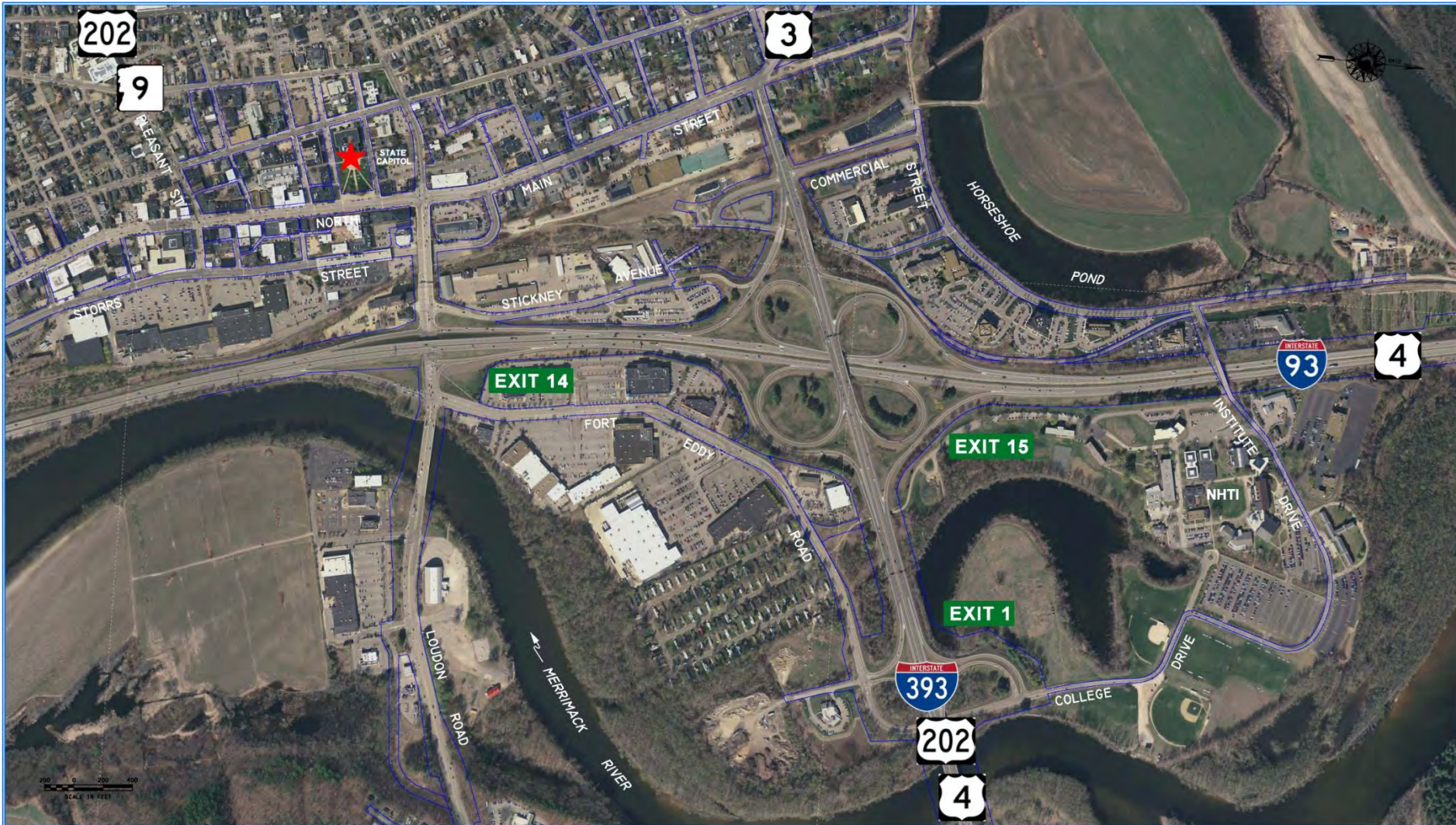




BOW-CONCORD I-93 CORRIDOR PROJECT

**EXIT 13 AREA
CONCEPT A**



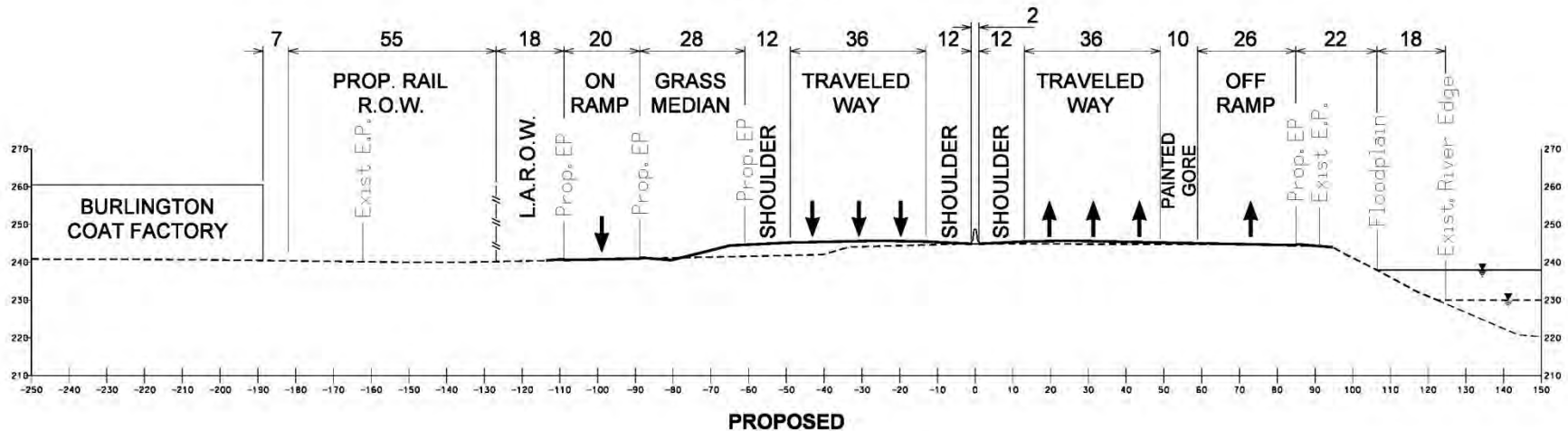
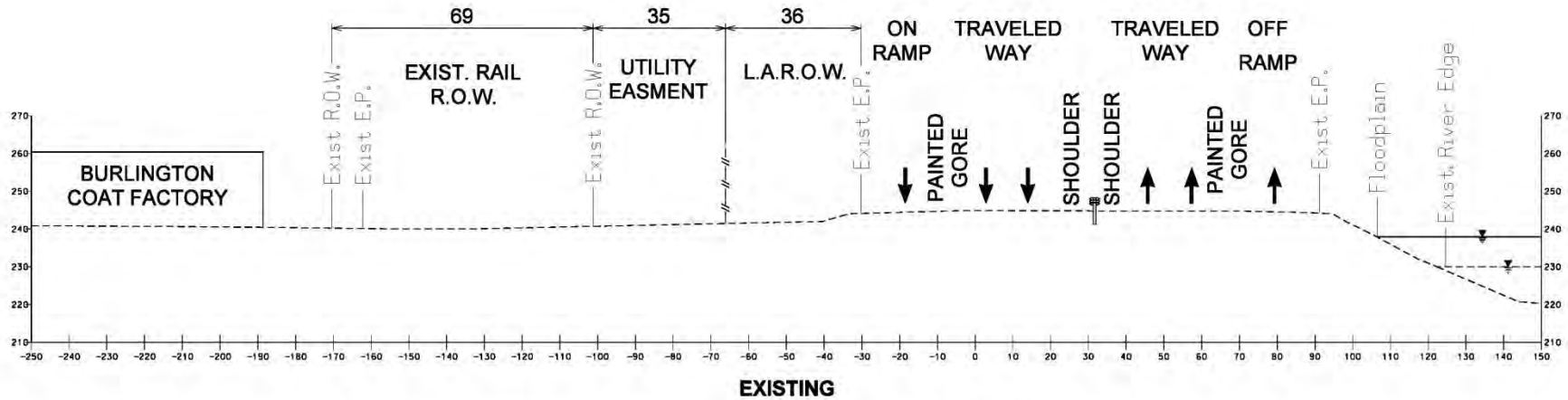




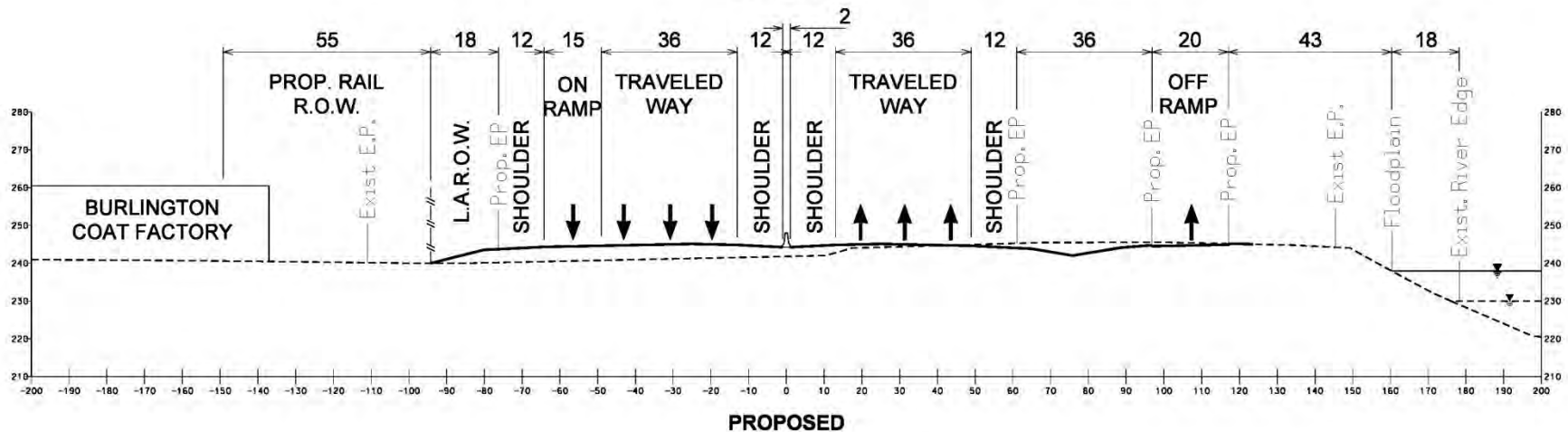
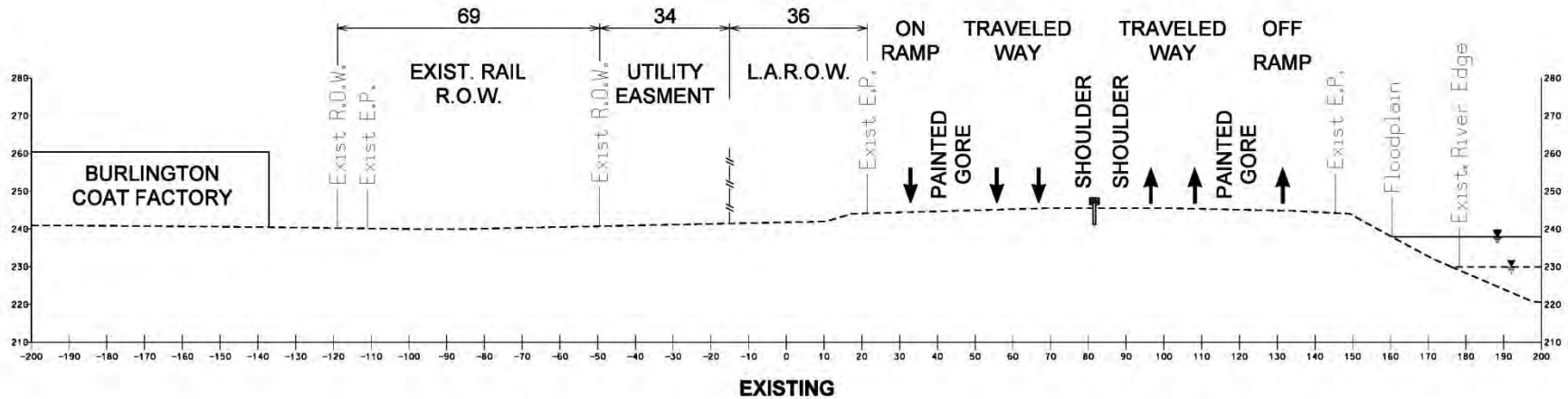
Pinch Point

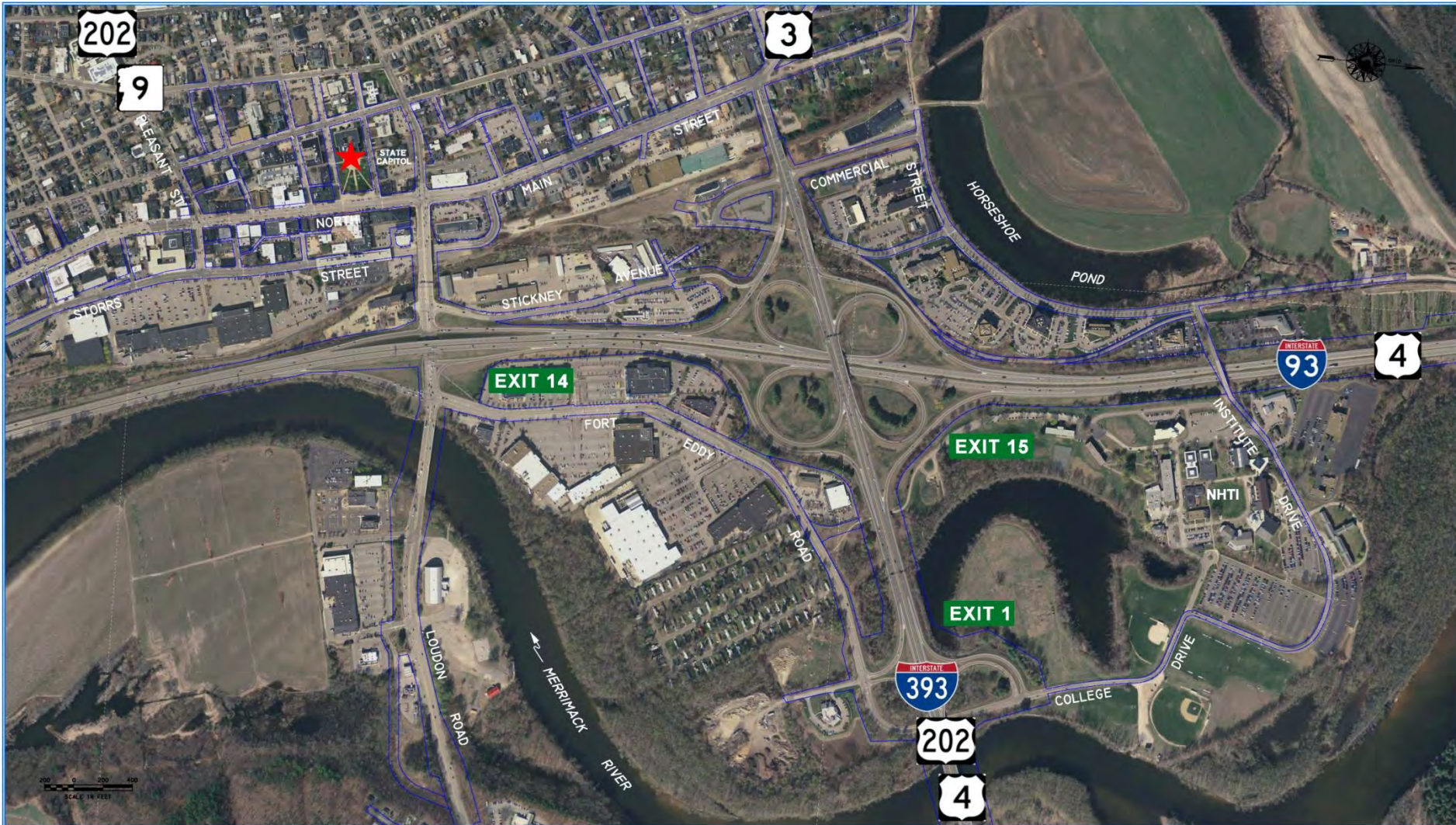


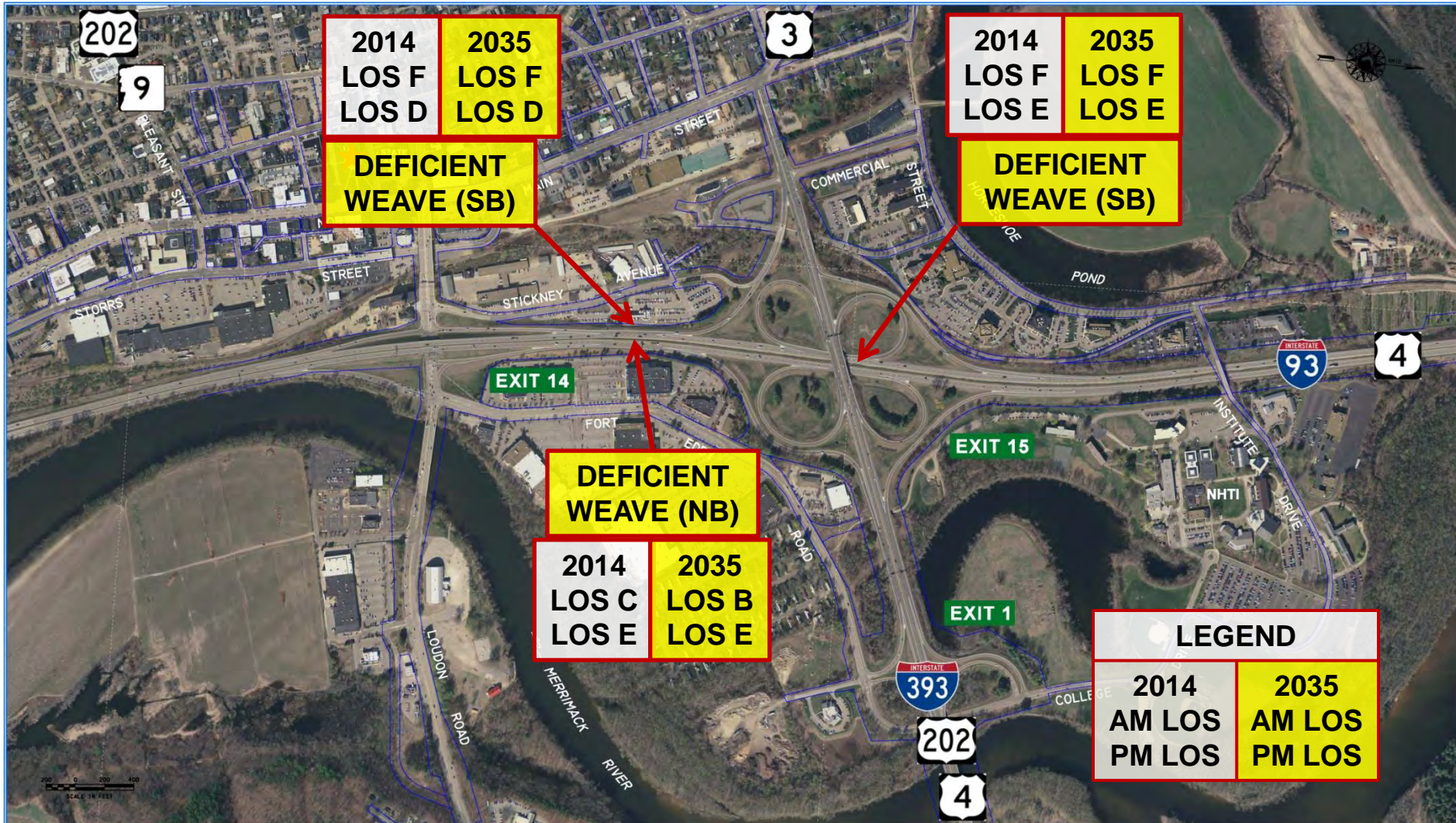
Pinch Point



Pinch Point



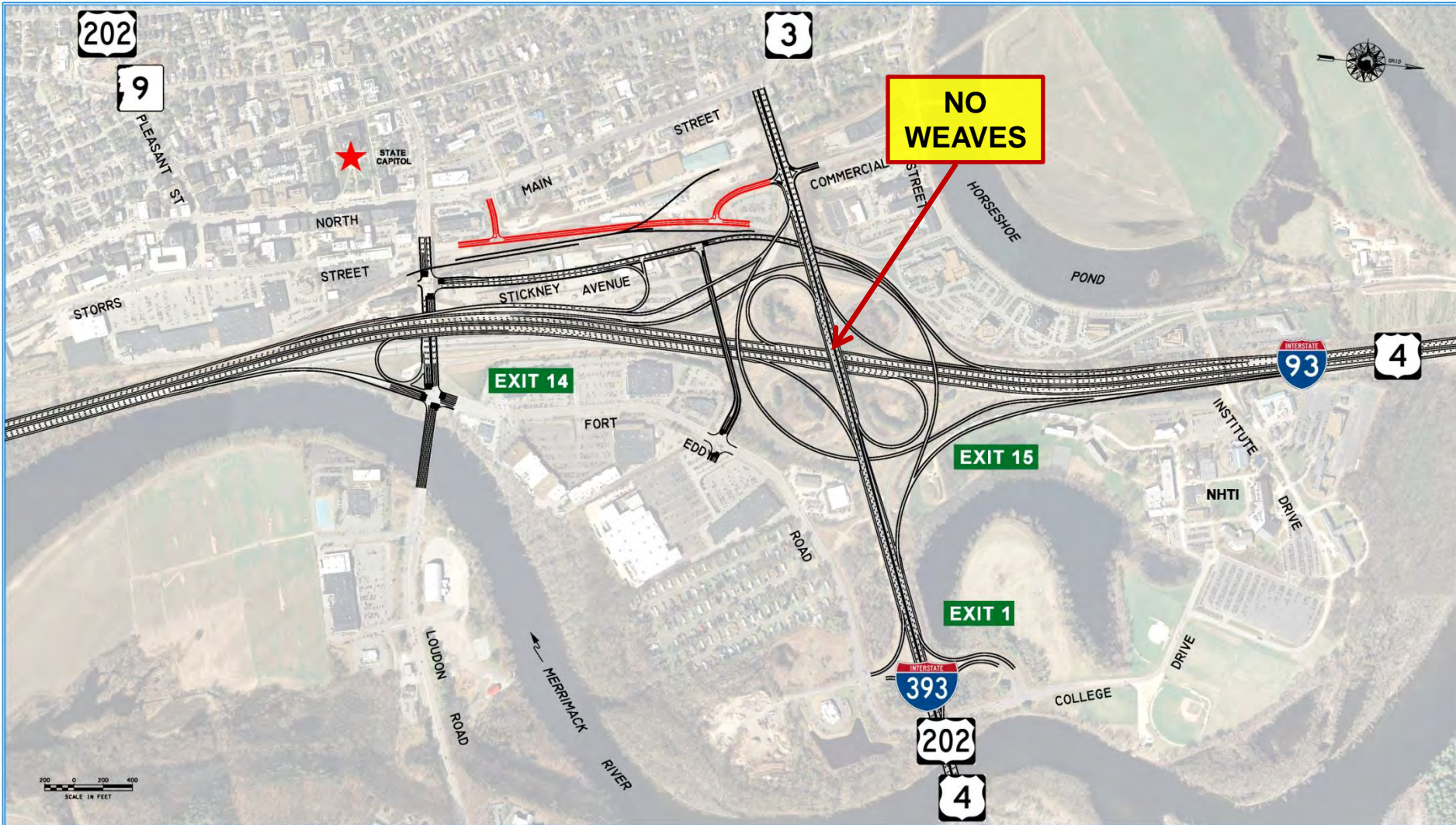












Opportunity Corridor Concept

KEY ELEMENTS

REGIONAL COMPONENTS

- > REDUCED ACCESS TO I-93 FROM DOWNTOWN VIA EXIT 15
- > NO ACCESS FROM NB I-93 TO DOWNTOWN AT EXIT 15
- > CD ROADS BETWEEN EXITS 14 & 15
- > ONE WEAVE REMAINS

OPPORTUNITY CORRIDOR COMPONENTS

- > NEW LOCAL CROSSING TO FORT EDDY ROAD
- > EXTENSION OF STORRS STREET
- > PRESERVATION OF RAIL CORRIDOR
- > DEPRESSED I-93
- > ENHANCED RIVER ACCESS
- > FOUR BRIDGES REQUIRED

NOTE: ALL OPPORTUNITY CORRIDOR COMPONENTS HIGHLIGHTED IN YELLOW





Next Steps

- Determine Alternatives for Consideration
- Public Outreach



Questions & Answers

www.i93bowconcord.com

